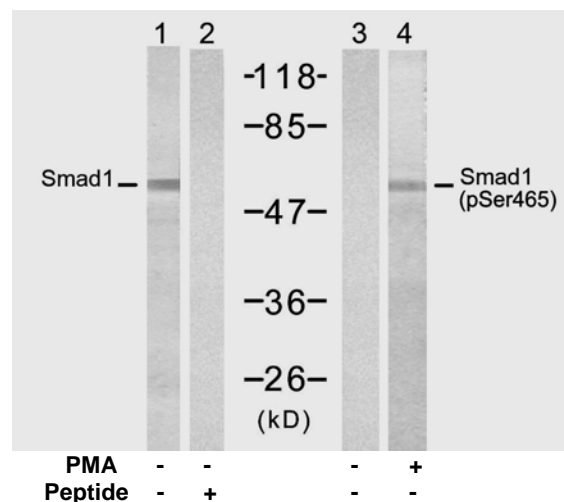


Rabbit anti Smad1 (pSer465)

- Catalog Number:** pAP11321
Amount: 100µl (10 Western Blotting)
Swiss-Prot No. : Q15797
Form of Antibody: Rabbit IgG in phosphate buffered saline (without Mg²⁺ and Ca²⁺), pH 7.4, 150mM NaCl, 0.02% sodium azide and 50% glycerol.
Storage/Stability: Store at -20°C/1 year
Immunogen: The antiserum was produced against synthesized phosphopeptide derived from human Smad1 around the phosphorylation site of serine 465 (I-S-S-V-S^P).
Purification: The antibody was affinity-purified from rabbit antiserum by affinity-chromatography using epitope-specific phosphopeptide. The antibody against non-phosphopeptide was removed by chromatography using non-phosphopeptide corresponding to the phosphorylation site.
Specificity/Sensitivity: Smad1 (Phospho-Ser465) Antibody detects endogenous levels of Smad1 only when phosphorylated at serine 465.
Reactivity: Human, Mouse, Rat
Applications: WB: 1:1000
References: Hiroaki Seto, et al. (2004) J Clin Invest. March 1; 113(5): 718–726
 Linyu Li, et al. (2004) Mol Cell Biol. January; 24(2): 856–864.
 Claire Nourry, et al. (2004) BMC Cell Biol. 5: 20



Western blot analysis of extract from 293 cells, untreated or treated with PMA (200nM, 30min), using Smad1 (Ab-465) Antibody (AP21321, Lane 1 and 2) and Smad1 (Phospho-Ser465) Antibody (pAP11321, Lane 3 and 4).

For Research Use Only

Contact & Ordering Information: Angio-Proteomie, 11 Park Drive, Suite 12, Boston, MA 02215, USA. Fax: (480) 247-4337, angioproteomie@gmail.com